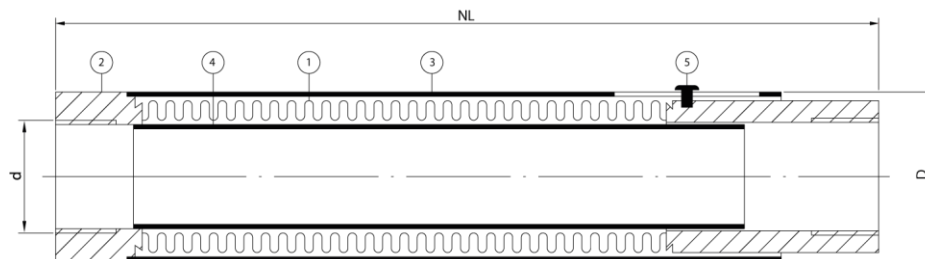


Stainless steel expansion joint, type ABFT

Applications

An expansion joint with female thread sockets which guarantee fast and smooth tightening. For applications in mainly heating systems, where a thermal expansion of the piping has to be absorbed. Due to its aesthetic appearance, this expansion joint is widely used in living rooms, hotel chambers, offices etc. With the help of the limiting-pin, minimum and maximum limits and pretension are observed easily.



Technical description

Bellow (1)	: AISI 316Ti
Sockets (2)	: Carbon Steel
Outer sleeve (3)	: Carbon Steel
Inner sleeve (4)	: AISI 304
Pin (5)	: Carbon Steel

Diameter	Type	NL	Axial	Axial	Max.	Max.
DN (d)		neutral	Compression	Extension	Pressure	Pressure
mm (in)		length	mm	mm	@20°C/bar	@100°C/bar
15(1/2")	ABFT151650	260	-13	+12	16	10
20(3/4")	ABFT201650	260	-13	+12	16	10
25(1")	ABFT251650	260	-13	+12	16	10
32(1 1/4")	ABFT321650	260	-13	+12	16	10
40(1 1/2")	ABFT401650	260	-13	+12	16	10
50(2")	ABFT501650	260	-13	+12	16	10

For combined movements, consult Amniflex BV.

All information in this document is without any obligation, specifications subject to change without any notice.

Amniflex B.V.

Abraham van Stolkweg 118
3041 JA, Rotterdam
T: +31(0)10 2982121
E: amniflex@plastiflex.com
www.amniflex.com

BTW nr. NL862140729B01
Bank: KBC Bank NV
KREDNL2XXXX
IBAN NL23 KRED0633024376

K.v.K. Rotterdam nr. 81568053

Al onze aanbiedingen en leveranties geschieden volgens onze algemene leveringsvoorwaarden.

