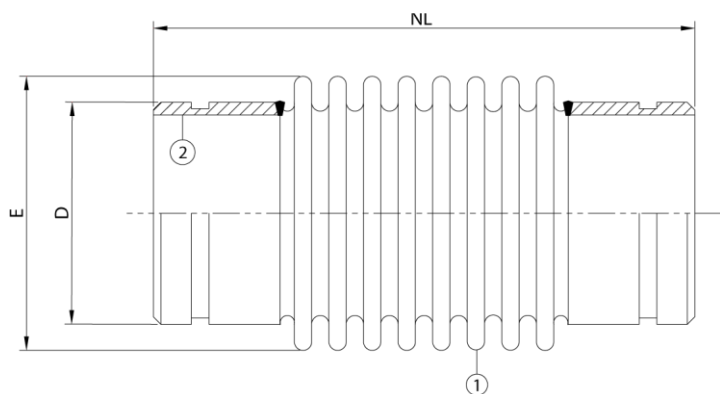


## Stainless steel expansion joint, type ANS

### Applications

An expansion joint with steel grooved ends for use within grooved end pipe systems, e.g. Grinnell, Victaulic, etc. Using these couplings and fittings, combines a number of advantages. The ease and swiftness of installation reduces the actual time needed "on site". For applications in mainly heating systems, where a thermal expansion of the piping has to be absorbed. This type of expansion joint is basically meant for axial movements. The shown type is recommended for mounting with Grinnell Rigid couplings.



### Technical description

Bellow (1) : AISI 316Ti  
Grooved ends (2) : Carbon Steel

Diameter	Type	NL neutral length	Axial Compression	Axial Extension			Max. Pressure	Max. Pressure
DN (d)		mm	mm	mm	D	E	@20°C/bar	@100°C/bar
80(3")	ANS 80-16-40	205	-20	+20	88,9x6,3	104	16	10
100(4")	ANS 100-16-40	200	-20	+20	114,3x6,3	127	16	10
125(5")	ANS 125-16-50	210	-25	+25	139,7x6,3	135	16	10
150(6")	ANS 150-16-50	245	-25	+25	168,3x8	184	16	10
200(8")	ANS 200-16-50	275	-25	+25	219,1x8	235	16	10

For combined movements, consult Amniflex BV.

*All information in this document is without any obligation, specifications subject to change without any notice.*

### Amniflex B.V.

Abraham van Stolkweg 118  
3041 JA, Rotterdam  
T: +31(0)10 2982121  
E: amniflex@plastiflex.com  
www.amniflex.com

BTW nr. NL862140729B01  
Bank: KBC Bank NV  
KREDNL2XXXX  
IBAN NL23 KRED0633024376

K.v.K. Rotterdam nr. 81568053

Al onze aanbiedingen en leveranties geschieden volgens onze algemene leveringsvoorwaarden.

