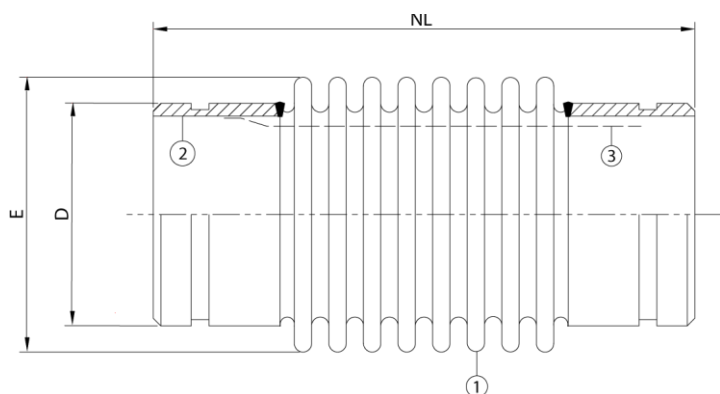


## Stainless steel expansion joint, type ALG

### Applications:

An expansion joint with steel grooved ends for use within grooved end pipe systems, e.g. Grinnell, Victaulic, etc. Using these couplings and fittings, combines a number of advantages. The ease and swiftness of installation reduces the actual time needed "on site". For applications in mainly heating systems, where a thermal expansion of the piping has to be absorbed. This type of expansion joint is basically meant for axial movements. The shown type is recommended for mounting with Grinnell Rigid couplings.



### Technical description

Bellow (1) : AISI 316Ti  
Grooved ends (2) : Carbon Steel  
Inner sleeve (3) : AISI 304

Diameter DN	Type	NL neutral length	Axial compression	D	E	Max. pressure	Max. pressure
mm (in)		mm	mm	mm	mm	@20°C/bar	@100°C/bar
25(1")	ALG 25-16-40	200	-20	+20	33,7x5,0	16	10
32(1¼")	ALG 32-16-40	205	-20	+20	42,4x4,5	16	10
40(1½")	ALG 40-16-50	234	-25	+25	48,3x5	16	10
50(2")	ALG 50-16-60	276	-30	+30	60,3x5	16	10
65(2½")	ALG 65-16-60	261	-30	+30	76,1x5	16	10

For combined movements, consult Amniflex BV.

*All information in this document is without any obligation, specifications subject to change without any notice.*

### Amniflex B.V.

Abraham van Stolkweg 118  
3041 JA, Rotterdam  
T: +31(0)10 2982121  
E: amniflex@plastiflex.com  
www.amniflex.com

BTW nr. NL862140729B01  
Bank: KBC Bank NV  
KREDNL2XXXX  
IBAN NL23 KRED0633024376

K.v.K. Rotterdam nr. 81568053

Al onze aanbiedingen en leveranties geschieden volgens onze algemene leveringsvoorwaarden.

