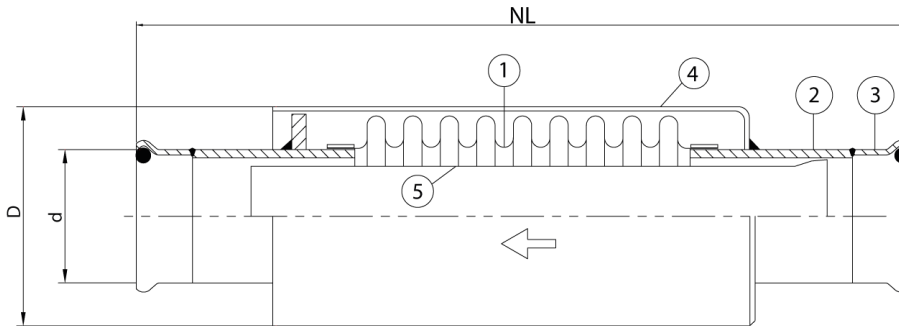


Stainless steel expansion joint, type ABSM

Applications

An expansion joint with stainless steel press fittings, e.g. Mapress, Xpress, Profipress, Bonfix etc., which guarantee very fast and smooth tightening. For applications in mainly heating systems, where a thermal expansion of the piping has to be absorbed. The expansion joint will be delivered pre-stressed, which allows a maximum movement.



Technical description

Bellow (1)	: AISI 316Ti
Welding ends (2)	:
Carbon Steel	
Mapress fitting (3)	: AISI 316L
Outer sleeve (4)	: AISI 304
Inner sleeve (5)	: AISI 304

Diameter	Type	NL	Axial	D	d	Max.	Max.
DN		Pre-stressed length	Compression	mm	mm	Pressure	Pressure
mm (in)		mm	mm			@20°C/bar	@100°C/bar
15(1/2")	ABSM 151630	280	-30	32	18	16	10
20 (3/4")	ABSM 201630	284	-30	38	22	16	10
25(1")	ABSM 251630	306	-30	45	28	16	10
32(1 1/4")	ABSM 321630	327	-30	52	35	16	10
40(1 1/2")	ABSM 401630	340	-30	63	42	16	10
50(2")	ABSM 501644	387	-44	76	54	16	10

For combined movements, consult Amniflex BV

All information in this document is without any obligation, specifications subject to change without any notice.

Amniflex B.V.

Abraham van Stolkweg 118
3041 JA, Rotterdam
T: +31(0)10 2982121
E: amniflex@plastiflex.com
www.amniflex.com

BTW nr. NL862140729B01
Bank: KBC Bank NV
KREDNL2XXXX
IBAN NL23 KRED0633024376

K.v.K. Rotterdam nr. 81568053

Al onze aanbiedingen en leveranties geschieden volgens onze algemene leveringsvoorwaarden.

