

Stainless steel expansion joint, type ABFTM

Applications

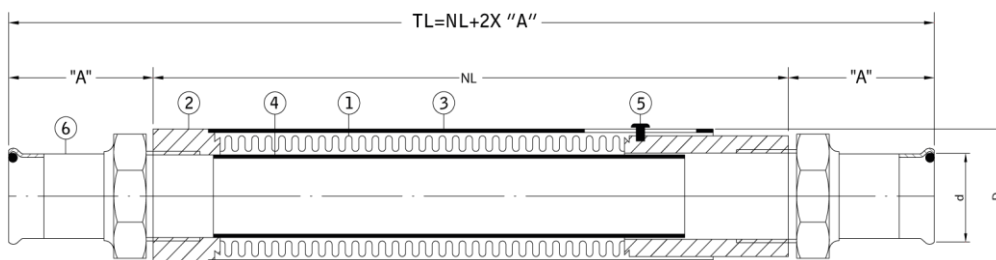
An expansion joint with female thread socks and prefab stainless steel press fittings, e.g. Mapress, Xpress, Profipress, Bonfix etc., which guarantee very fast and smooth tightening. For applications in mainly heating systems, where a thermal expansion of the piping has to be absorbed. Due to its aesthetic appearance, this expansion joint is widely used in living rooms, hotel chambers, offices etc. With the help of the limiting-pin, minimum and maximum limits and pretension are observed easily.



Technical Description

Bellow (1) : AISI 316Ti
 Sockets (2) : Carbon Steel
 Outer sleeve (3) : Carbon Steel
 Inner sleeve (4) : AISI 304
 Pin (5) : Carbon Steel

Mapress-fitting (6) : AISI 316L



"A": Is dependable of the brand Press fitting.

Diameter DN (d)	Type	NL neutral length	Axial Compression	Axial Extension	D	d	Max. Pressure	Max. Pressure
mm (in)		mm	mm	mm	mm	mm	@20°C/bar	@100°C/bar
15(1/2")	ABFTM 151650	260	-13	+12	35	18	16	10
20(3/4")	ABFTM 201650	260	-13	+12	42	22	16	10
25(1")	ABFTM 251650	260	-13	+12	51	28	16	10
32(1 1/4")	ABFTM 321650	260	-13	+12	60	35	16	10
40(1 1/2")	ABFTM 401650	260	-13	+12	63	42	16	10
50(2")	ABFTM 501650	260	-13	+12	70	54	16	10

For combined movements, consult Amniflex BV

All information in this document is without any obligation, specifications subject to change without any notice.

Amniflex B.V.

Abraham van Stolkweg 118
 3041 JA, Rotterdam
 T: +31(0)10 2982121
 E: amniflex@plastiflex.com
 www.amniflex.com

BTW nr. NL862140729B01
 Bank: KBC Bank NV
 KREDNL2XXXX
 IBAN NL23 KRED0633024376

K.v.K. Rotterdam nr. 81568053

Al onze aanbiedingen en leveranties geschieden volgens onze algemene leveringsvoorwaarden.

