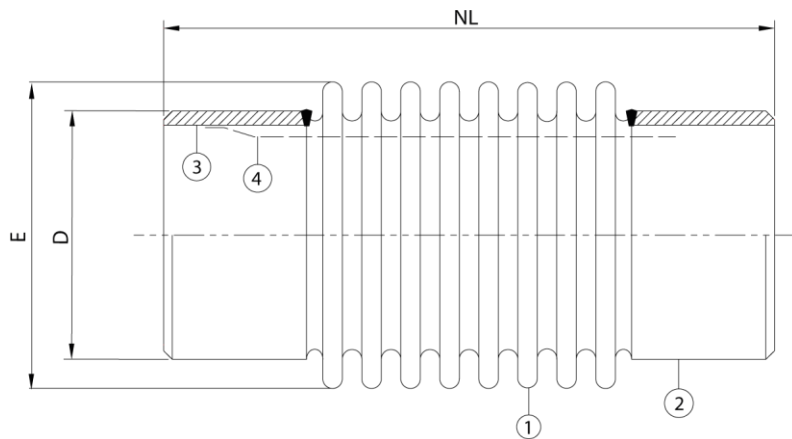


Stainless steel expansion joint, type ANW

Applications

An expansion joint with steel welding ends for applications in mainly heating systems, where a thermal expansion of the piping has to be absorbed. This type of expansion joint has to be welded into the piping system and it is basically meant for axial movements.



Technical description

Bellow (1) : AISI 316Ti
 Welding ends (2+3) : Carbon Steel
 Inner sleeve (4 Optional) : AISI

Diameter	Type	NL	Axial	Axial			Max.	Max.
DN		neutral	compression	extension	D	E	pressure	pressure
mm (in)		length	mm	mm			@20°C/bar	@100°C/bar
15(1/2")	ANW 151620	148	-10	+10	21,3x2,75	27	16	10
20 (3/4")	ANW 201622	151	-11	+11	26,9x2,75	32	16	10
25(1")	ANW 25-16-26	152	-13	+13	33,7x3,25	39	16	10
32(1 1/4")	ANW 32-16-26	186	-13	+13	42,4x3,25	46	16	10
40(1 1/2")	ANW 40-16-36	202	-18	+18	48,3x3,5	58	16	10
50(2")	ANW 50-16-46	224	-23	+23	60,3x4	69	16	10
65(2 1/2")	ANW 65-16-48	236	-24	+24	76,1x3,6	87	16	10
80(3")	ANW 80-16-40	205	-20	+20	88,9x6,4	104	16	10
100(4")	ANW 100-16-40	205	-20	+20	114,3 x4,0	127	16	10
125(5")	ANW 125-16-50	210	-25	+25	139,7x4,0	155	16	10
150(6")	ANW 150-16-50	265	-25	+25	168,3x4,5	184	16	10
200(8")	ANW 200-16-50	276	-25	+25	219,1x6,3	235	16	10
250(10")	ANW 250-16-50	305	-25	+25	273x6,3	285	16	10
300(12")	ANW 300-16-50	335	-25	+25	323,9x8,0	337	16	10

For combined movements, consult Amniflex BV.

All information in this document is without any obligation, specifications subject to change without any notice.

Amniflex B.V.

Abraham van Stolkweg 118
 3041 JA, Rotterdam
 T: +31(0)10 2982121
 E: amniflex@plastiflex.com
 www.amniflex.com

BTW nr. NL862140729B01
 Bank: KBC Bank NV
 KREDNL2XXXX
 IBAN NL23 KRED0633024376

K.v.K. Rotterdam nr. 81568053

Al onze aanbiedingen en leveranties geschieden volgens onze algemene leveringsvoorwaarden.

