

Composite Hose End Fittings

Specially designed end fittings have been developed for use with Amniflex composite hoses such as threaded ends (BSP and NPT) and flanged ends (EN 1092-1 and ANSI). The hose tail and ferrule are specially designed to meet, in combination with the Amniflex composite hose, the highest quality and safety in the assembled hose.

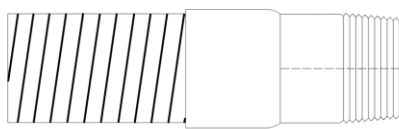
Also available are standard connections like; Storz-, Kamlok , Bauer and Guillemin couplings. For fixed and swivel flange types we can also deliver JIS-, TTMA-, and other type of flanges.

By means of a hydraulic operated press in combination with a two component epoxy, a ferrule is externally swaged onto the hose to secure the hose shank and guaranty a leak proof connection between hose and fitting. (wet assembly method). After the swaging the two component epoxy need to harden out at least for 24 hours before the hose assembly can be tested and go in use.

- All metal components, including end fittings, are electrically bonded to give full end-to-end electrical continuity.
- All ferrules are welded to the end fitting before swaging for even safer operating conditions.
- Hose shank, stub end, outside thread, flanges and the ferrule all can be combined in several materials.
- Materials available are carbon steel and stainless steel. For special applications we can deliver Polypropylene connections (combined with dry assembly method).

For other materials and, or, type of couplings please contact our sales department.

TYPE Thread: Male threaded nipple BSPP or NPT



Male Thread

DN Hose		Male thread BSPP/NPT inches
mm	inches	
25	1	1
40	1 ½	1 ½
50	2	2
65	2 ½	2 ½
76	3	3
100	4	4
152	6	6

Amniflex B.V.

Abraham van Stolkweg 118
3041 JA, Rotterdam
T: +31(0)10 2982121
E: amniflex@plastiflex.com
www.amniflex.com

BTW nr. NL862140729B01
Bank: KBC Bank NV
KREDNL2XXXX
IBAN NL23 KRED0633024376

K.v.K. Rotterdam nr. 81568053

Al onze aanbiedingen en leveranties geschieden volgens onze algemene leveringsvoorwaarden.



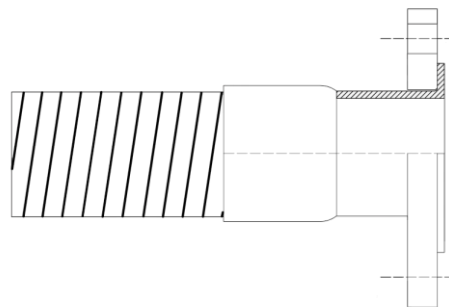
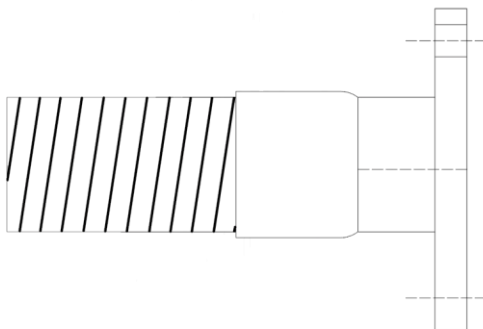


Fixed Flange



Floating Flange

Fixed Flange EN1092-1/ANSI: Floating Flange EN1092-1/ANSI:



Composite Hose End Fittings					
DN Hose		EN 1092-1			
mm	inches	Flange OD mm	Bolt Circle mm	Holes	Hole ID mm
25	1	115	85	4	14
32	1 ¼	140	100	4	18
40	1 ½	150	110	4	18
50	2	165	125	4	18
65	2 ½	185	145	4 or 8	18
80	3	200	160	8	18
100	4	220	180	8	18
125	5	250	210	8	18
150	6	285	240	8	22
200	8	340	295	8	22
250	10	395	350	12	22

Composite Hose End Fittings					
DN Hose		ASME B16.5 – ANSI 150 LBS			
mm	inches	Flange OD mm	Bolt Circle mm	Holes	Hole ID mm
25	1	100	79,40	4	15,88
40	1 ½	125	98,40	4	15,88
50	2	150	120,70	4	19,05
65	2 ½	180	139,70	4	19,05
80	3	190	152,40	4	19,05
100	4	230	190,50	8	19,05
125	5	255	215,90	8	22,23
150	6	280	241,30	8	22,23
200	8	345	298,50	8	22,23
250	10	405	362,00	12	22,23

All information in this document is without any obligation, specifications subject to change without any notice.

Amniflex B.V.
 Abraham van Stolkweg 118
 3041 JA, Rotterdam
 T: +31(0)10 2982121
 E: amniflex@plastiflex.com
 www.amniflex.com

BTW nr. NL862140729B01
 Bank: KBC Bank NV
 KREDNL2XXXX
 IBAN NL23 KRED0633024376

K.v.K. Rotterdam nr. 81568053

Al onze aanbiedingen en leveranties geschieden volgens onze algemene leveringsvoorwaarden.

