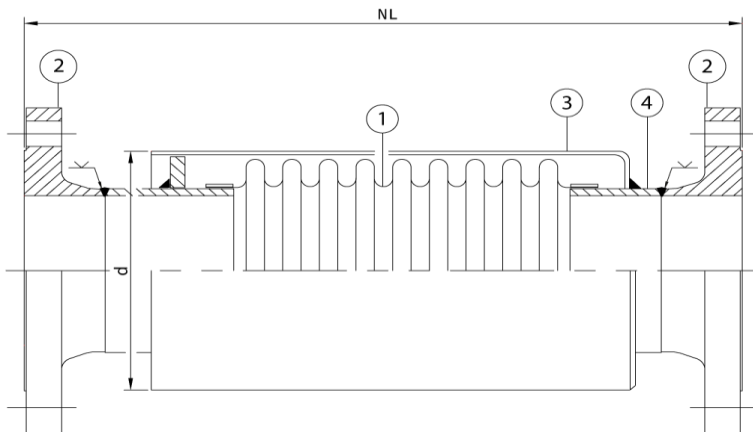


## Stainless steel Expansion Joint, type RFA-S

### Applications

A stainless steel expansion joint with carbon steel flanges for the use in thermal oil pipe systems. For applications where a thermal expansion of the piping has to be absorbed. This type of expansion joint is basically meant for axial movements only



### Technical description

Bellow (1) : AISI 316  
 Flanges (2) : Carbon steel, PN 16  
 Outer cover (3) : AISI 304L/AISI 316L  
 Welding ends (4) : Carbon steel

Diameter		NL		Axial	Max	Max.
DN	Type	neutral length	d	compression	pressure	pressure
mm (in)		mm	mm	mm	@20°C/bar	@200°C/bar
80(3")	RFA-S 80-16-45	366	140	-45	16	10
100(4")	RFA-S 100-16-45	364	154	-45	16	10
125(5")	RFA-S 125-16-50	372	206	-50	16	10
150(6")	RFA-S 150-16-60	366	219	-60	16	10
200(8")	RFA-S 200-16-55	419	273	-55	16	10

*All information in this document is without any obligation, specifications subject to change without any notice.*

#### Amniflex B.V.

Abraham van Stolkweg 118  
 3041 JA, Rotterdam  
 T: +31(0)10 2982121  
 E: amniflex@plastiflex.com  
 www.amniflex.com

BTW nr. NL862140729B01  
 Bank: KBC Bank NV  
 KREDNL2XXXX  
 IBAN NL23 KRED0633024376

K.v.K. Rotterdam nr. 81568053

Al onze aanbiedingen en leveranties geschieden volgens onze algemene leveringsvoorwaarden.

